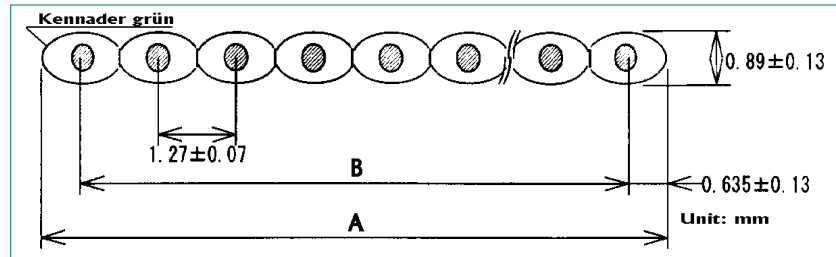
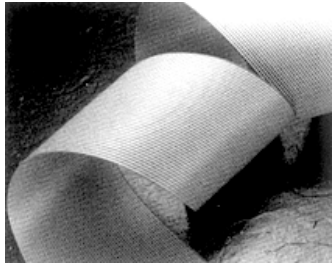


**Conductor: AWG 28, CU-braid tinned, 19x0,08 (19/40) 0,09 mm<sup>2</sup>**



Conductor construction : 1 + 6 + 12 = 19 x 0,08 (19/40)

**Technical data**

Temperature rating	: - 20° C ~ + 105° C
Voltage rating	: ≤ 300V
Test voltage	: 2000V for 1 min.
Current rating	: ≤ 1.2 A / 20° C
Insulation	: heat resistant PVC, with a green edge marking
Flame retardant	: VW-1
Shore hardness	: 94 Shore (A) ± 5
Conductor resistance	: ≤ 240 Ω / km at 20°C
Insulation resistance	: ≥ 100 M Ω x km at 20°C
UL- STYLE	: 20029 / 105 °C 300V, VW-1

The *FastCon- High Flex* flat ribbon cable is especially suited to any use involving high flexing stresses, e.g. in printers.  
Depending on the application, by a bend radius of 25mm up to 70 million flex cycles are possible.

**Delivery program**

Standard delivery form : 61.0m spools for 5 and 6 core.  
> 8 core is on 30.5m spools.  
SUFFIX – 038 = 61.0 m spools

Order-No.	Conduct.- number	A	B
JFCR28L-05HF127-038	5	6,35±0,20	5,08±0,20
JFCR28L-06HF127-038	6	7,62±0,20	6,35±0,20
JFCR28L-08HF127	8	10,16±0,20	8,89±0,20
JFCR28L-09HF127	9	11,43±0,20	10,16±0,20
JFCR28L-10HF127	10	12,70±0,20	11,43±0,20
JFCR28L-14HF127	14	17,78±0,20	16,51±0,20
JFCR28L-15HF127	15	19,05±0,20	17,78±0,20
JFCR28L-16HF127	16	20,32±0,20	19,05±0,20
JFCR28L-20HF127	20	25,40±0,20	24,13±0,20
JFCR28L-24HF127	24	30,48±0,20	29,21±0,20
JFCR28L-25HF127	25	31,75±0,20	30,48±0,20
JFCR28L-26HF127-038	26	33,02±0,20	31,75±0,20
JFCR28L-34HF127	34	43,18±0,30	41,91±0,30
JFCR28L-40HF127	40	50,80±0,30	49,53±0,30
JFCR28L-50HF127	50	63,50±0,30	62,23±0,30
JFCR28L-60HF127	60	76,20±0,30	74,93±0,30
JFCR28L-64HF127	64	81,28±0,30	80,01±0,30
JFCR28L-72HF127	72	91,44±0,40	90,17±0,40